

## Welcome

We welcome you as a guest in the house of the Lord. Please fill out the “Welcome” card found in the pew rack and place it in the offering plate. We extend a cordial invitation to you to join us in Fellowship Hall for refreshments following the service.

**Harbor Church 101** If you are interested in knowing more about Harbor Church, feel free to ask anyone with a nametag (they are Deacons). You can become a regular member, an associate member who remains a member of a mainland church, or simply a friend. If you are interested in being baptized as a sign of your faith in Christ—either in the church or at the beach—please speak to the Pastor.

## Special Thanks

Worship Leader  
Ushers  
Coffee  
Flowers

Ellen Jacke  
Lynn Paquin & TBA  
Bill & Sue Gill  
La Bella Rose

## Music Ministry

Special thanks to *Cameron Greenlee & Becca Hollaway* for sharing their gifts of music with us.

## Flowers

If you would like to give flowers in someone’s memory, please contact the Flower Committee member and the church

### *Ministers to the World*

All Members of the Harbor Church

Rev. Stephen E. Hollaway	Pastor
Joe Cantone & Kimberly Dugan	Sextons
Laura Chadwick	Financial Secretary
Laura Chadwick	Administrative Assistant
Martha Ball	Communications Manager

**Office hours: Tuesday 10:00 – 1:00 p.m. & Friday 11:00 a.m. – 2:00 p.m.**

**First Baptist Church of Block Island**

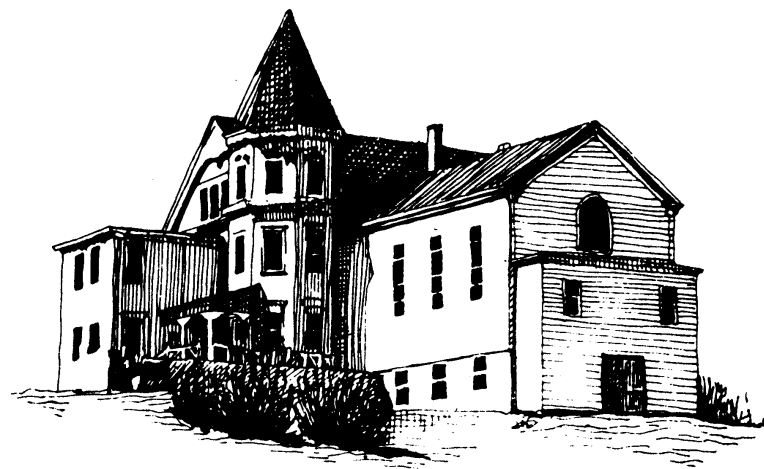
(401) 466-5940 Email: [harborchurch1765@gmail.com](mailto:harborchurch1765@gmail.com)

Pastor: (401) 536-4609 Website: [www.harborchurchblockisland.org](http://www.harborchurchblockisland.org)

We are an affiliate of the American Baptist Churches, USA

# Harbor Church

*Gathered October 23, 1765*



## *Mission Statement*

*Joyfully, we are invited by the Spirit of God to embrace, celebrate and minister to the hopes and hurts of our members, neighbors, and the larger community through Christ-centered prayer, worship, teaching, sharing and caring.*

🌀 *September 10 of 2017* 🌀

*Our 252<sup>nd</sup> year*

*10:00 a.m.*